



BEAUFORT GREEN

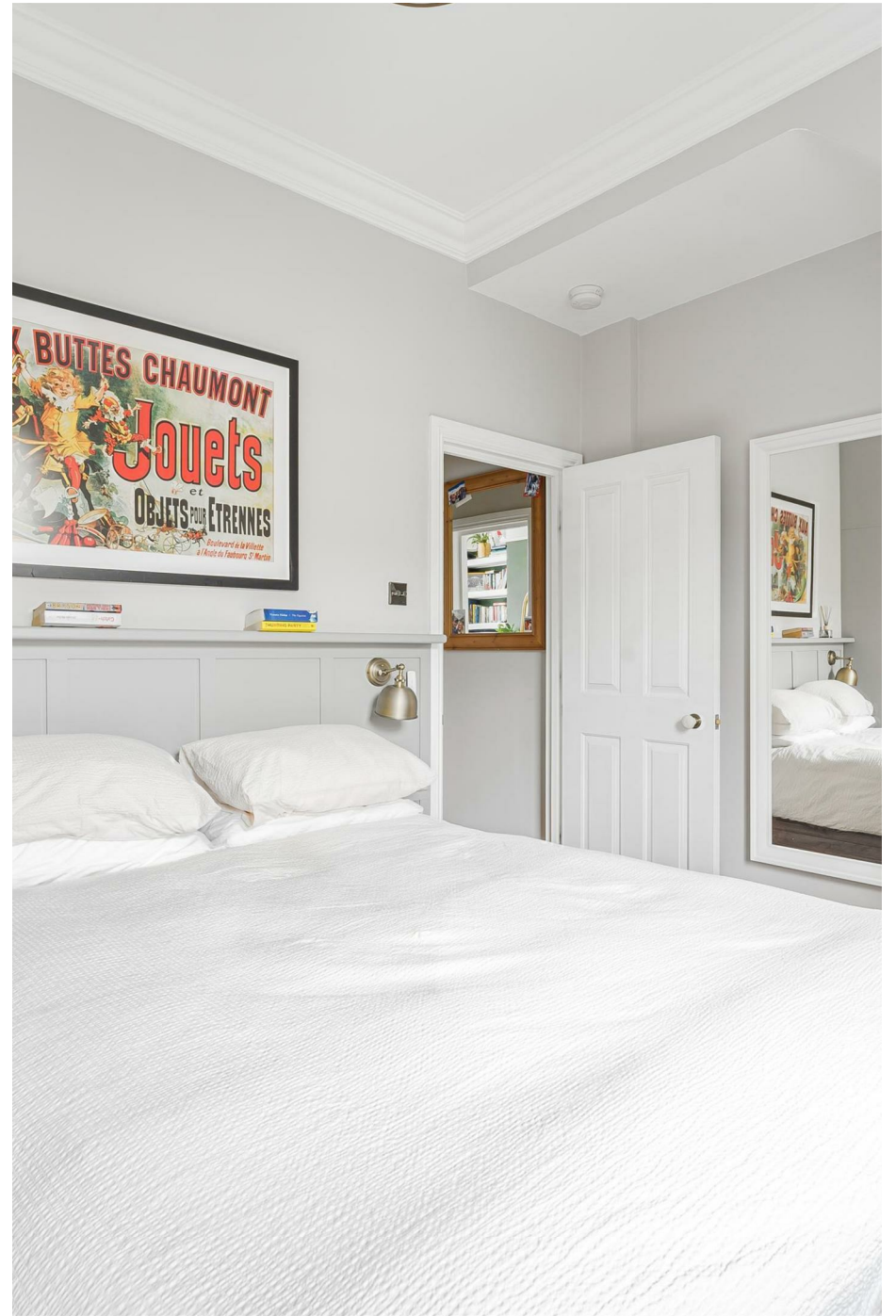
Halford Road, SW6

£450,000



A beautifully finished, one double bedroom apartment. The property has an open plan kitchen living room, with good ceiling height and is positioned on the raised ground floor of an impressive Victorian building. The property has been extensively refurbished with lots of built in storage.



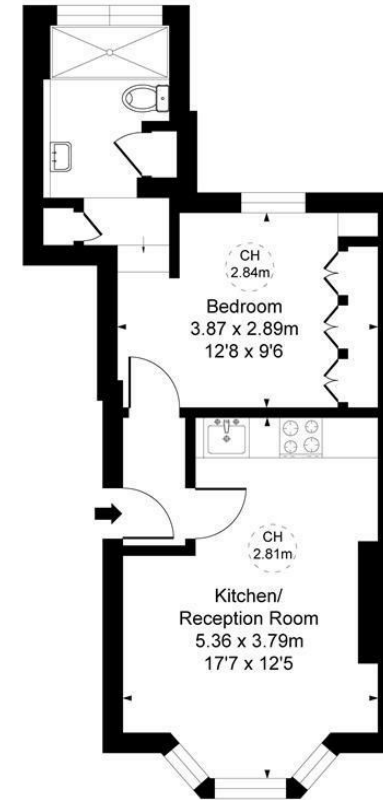


BEAUFORT GREEN



BEAUFORT GREEN

Halford Road, SW6
Approximate Gross Internal Area
36.59 sq m / 394 sq ft
(CH = Ceiling Heights)



Raised Ground Floor

At a Glance.

- Raised Ground Floor
- Well Finished Throughout
- Good Ceiling Height
- Built in Storage
- Open Plan Kitchen Living Room
- Close to Transport Links

This plan is not to scale. It is for guidance and not for valuation purposes.
All measurements and areas are approximate only, and have been prepared in accordance with the current edition of the RICS Code of Measuring Practice.

BEAUFORT GREEN

02074594100

charlie@beaufortgreen.co.uk

263 New Kings Road
London
SW16 1DR